

Option / Accessories

Printer

Operating parameters, chamber temperature, chamber pressure, temperature for articles to be sterilized, and sterilization cycle process can be printed.



Temperature Sensor for Articles to be Sterilized

Directly detects the temperature for articles to be sterilized.

※One-touch coupler to install sensor is provided.

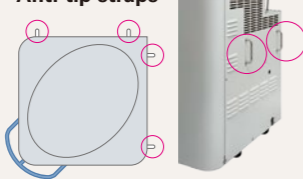


Data Output Function

The temperature data, pressure data can be exported to the external recorder.



Brackets for Anti-tip straps



Stainless Basket
ACA-1000B



Stainless Bucket
ACA-1000K



Long Basket
ACA-1000TP

Specifications

FLS-1000			220V model	230V model	240V model
Equipment category: (medical/laboratory)			Laboratory equipment		
Operating temperature range		Sterilization	105°C to 123°C*1		
Maximum operating pressure			0.193MPa		
Temperature	Display form		Digital		
	Display range		-15°C to 175°C		
Pressure gauge	Display form		Analog		
	Display range		0MPa to 0.4MPa (red zone:0.193MPa)		
Heat source (electric heater)			3.0kW	3.0kW	3.3kW
Safety devices			As listed in Safety Devices*2		
Time	Display form		Digital		
	Setting range	Sterilization	0:01-9:59 / 1-99 hours / 1-999 minutes / 0:01-9:59, 10-99 hours (switchable)		
Chamber dimensions			Inside diameter x inside dimension : φ450x678mm		
Chamber capacity			100L (0.100m ³)		
Chamber material			SUS304 (stainless steel)		
Main body dimensions (mm)			600Wx600Dx940H, top plate height: 785		
			680Wx680Dx1022H (including the pedal and control panel)		
Compliance of standard			IEC 61010-2-040, IEC61326-1		
Net weight			108kg		
Rated current			14A	13A	14A
Power requirements			Single-phase AC220V	Single-phase AC230V	Single-phase AC240V
			50/60Hz 15A	50/60Hz 15A	50/60Hz 15A
Power consumption (heat output)			3.0kW	3.0kW	3.3kW
			(2,580kcal/h)	(2,580kcal/h)	(2,838kcal/h)
Accessories			Stainless steel basket (φ415x233mm) 2 pcs		

*1. Max. operating temperature depends on the altitude level.

Features

- Large capacity
- Perfect height design
- Fine pressure adjustment function
- Power failure alert & restart
- Altitude setting function
- Safety lid opening design
- Standard equipped cooling fan
- Variable exhaust speed
- Timer
- Sterilizing water change alert
- Wide drain piping
- Steam trap water alert
- Intuitive display
- Annual inspection reminder
- Selective lid opening (L or R)
- Easy loading with foot pedal
- Easy water level check
- Liquid sterilizing course selectable

Safety Devices*2

- Safety valve
- Lid interlock
- Leakage breaker
- No water heating prevention
- Over-temperature prevention
- Over-pressure prevention
- Temperature sensor malfunction detection
- Pressure sensor malfunction detection
- Exhaust valve malfunction detection
- Low sterilizing water level detection
- Chamber lid open/close detection
- Drain access cover open detection
- Exhaust tank full level detection

Sales Office:



TOMY DIGITAL BIOLOGY CO., LTD.

3-14-17 Tagara, Nerima-ku, Tokyo 179-0073, Japan
e-mail: info@digital-biology.co.jp
URL: http://www.digital-biology.co.jp
phone: +81-3-5971-8160 fax: +81-3-3970-6036

TOMY SEIKO CO., LTD.

Manufacturer:

TOMY KOGYO CO., LTD.

3-14-17 Tagara, Nerima-ku, Tokyo 179-0073, Japan

All TOMY products have a limited one-year warranty. Specifications are subject to change according to product advancement. Tomy and Digital Biology is registered trademark of Tomy Seiko Co., Ltd. and Tomy Digital Biology Co., Ltd. Copyright 2018, Tomy Seiko and its subsidiaries. Printed in Japan.

3K06300R

TOMY

AUTOCLAVE
FLS-1000

Large Capacity
100ℓ



TOMY

HIGH-PRESSURE STEAM STERILIZER
FLS-1000

Large Capacity

100ℓ



100 liters of chamber capacity can sterilize bulk or large volume items.

Perfect Height Design

78.5cm

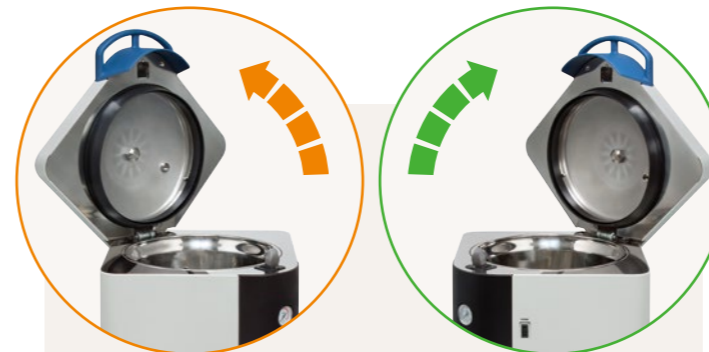


Perfect height design enables easy loading / unloading of the items.

Easily-accessible chamber allows easy cleaning.

Selective Lid Opening

Left or Right

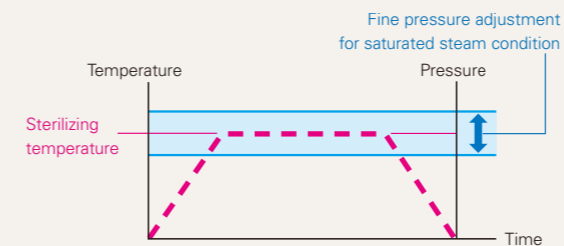


Operators can choose opening direction leftward or rightward depending on the installation space.

Secured Sterilization Fine Pressure Adjustment Function

Works automatically

Secured sterilization condition is created by saturated steam. Fine Pressure Adjustment Function automatically controls the pressure within a certain range to approach the saturated steam condition.



Wide Chamber

45cm

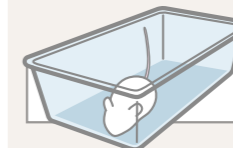
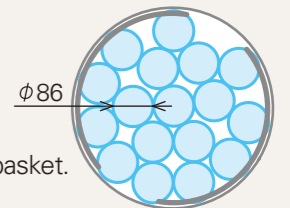


45cm Wide Chamber

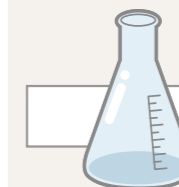
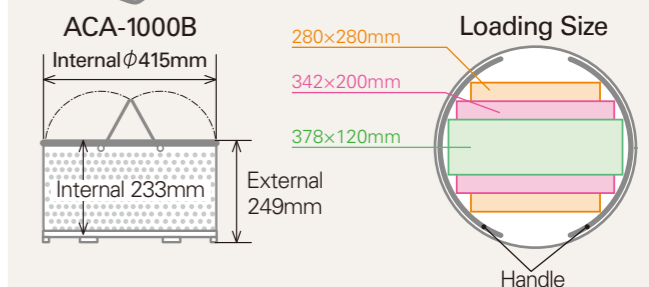


Bottle

Accommodate up to 500mL × 17 bottles into one basket.



Animal Cage



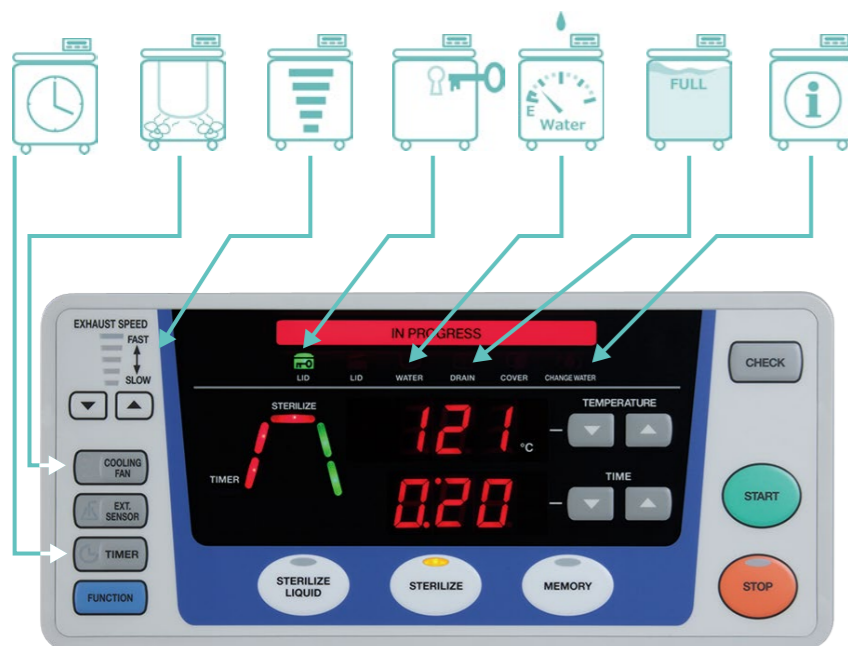
Flask



Custom Order Flask Stand

Accommodate 5,000mL × 4pcs

Intuitive Display



- Sterilizing Water Change Alert**
For water change timing.
- Annual Inspection Reminder**
For periodical inspection.
- Cooling Fan**
Save time by 3 levels cooling speed.
- Variable Exhaust Speed**
Save time by 6 levels steam exhaust.
- Low Sterilizing Water Level Detection**
Prevent no water operation.
- Steam Trap Water Drain Alert**
Prevent exhaust tank overflow.
- Timer**
- Lid Interlock**

Power Failure Alert & Restart

FLS-1000 can save time for re-sterilization work. When the power failure occurs during operation, FLS-1000 stores the operation process, and the operation can be restarted after power is restored.



For High Altitude Users

FLS-1000 allows users to set altitude level, can operate secured sterilization even though at high altitude place.



*Available up to 2,000m

Please visit for more details

TOMY FLS-1000

SEARCH